

GENERAL SPECIFICATIONS:

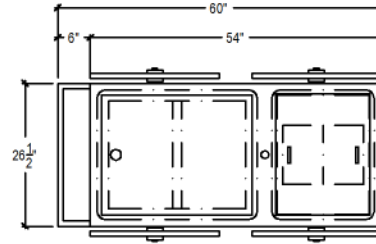
- 16 Gauge #304 Stainless Steel Constructed
- 24" Diameter Spoke Wheels
- Stainless Steel Roll Dome Covers
- Stainless Steel Push Bar
- 6' Umbrella

OPTIONS:

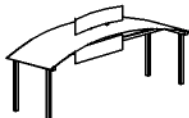
- Custom Exterior Panels (Laminate, Graphics, Powdercoat, Etc.)
- Cart Cover
- Propane

EQUIPMENT:

- 2-Pan Steam Well
- Drop-In Ice Pan

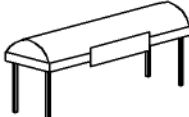


AWNING TYPES:

- 


■ The Arch

---

- 

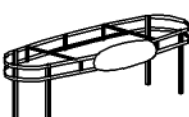
■ The Barrel

---

- 


■ The A-Frame

---

- 

■ The Halo

---

- 

■ The Square

