

GENERAL SPECIFICATIONS:

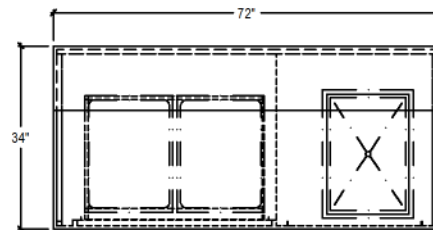
- 16 Gauge #304 Stainless Steel Countertop
- 6" Casters, Two (2) Rigid and Two (2) Swivel with Brakes
- Black Rubber Caster Skirt on Three (3) Sides
- Pull Out Storage Drawers
- Removable Speed Rail
- Black Poly Bar Top

OPTIONS:

- Vinyl Bumper
- Custom Bar Top (Corian, Granite, Ect.)
- Custom Exterior Panels (Laminate, Graphics, Powdercoat, Etc.)
- Bottle Rack

EQUIPMENT:

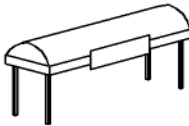
- Drop-In Ice Bin



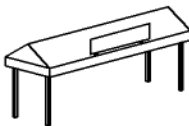
AWNING TYPES:



■ The Arch



■ The Barrel



■ The A-Frame



■ The Halo



■ The Square

