

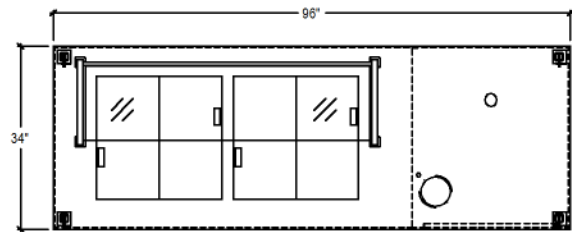
GENERAL SPECIFICATIONS:

- 16 Gauge #304 Stainless Steel Countertop
- 6" Casters, Two (2) Rigid and Two (2) Swivel with Brakes
- Black Rubber Caster Skirt on Three (3) Sides
- Hand Sink with Removable Water Tanks
- Built-In Freezer with Bi-Fold Lid
- Stainless Steel Sneezeguard
- Dipperwell

OPTIONS:

- Vinyl Bumper
- Drop Shelf
- Custom Exterior Panels (Laminate, Graphics, Powdercoat, Etc.)
- Track Lights
- Cart Cover

EQUIPMENT:



AWNING TYPES:

